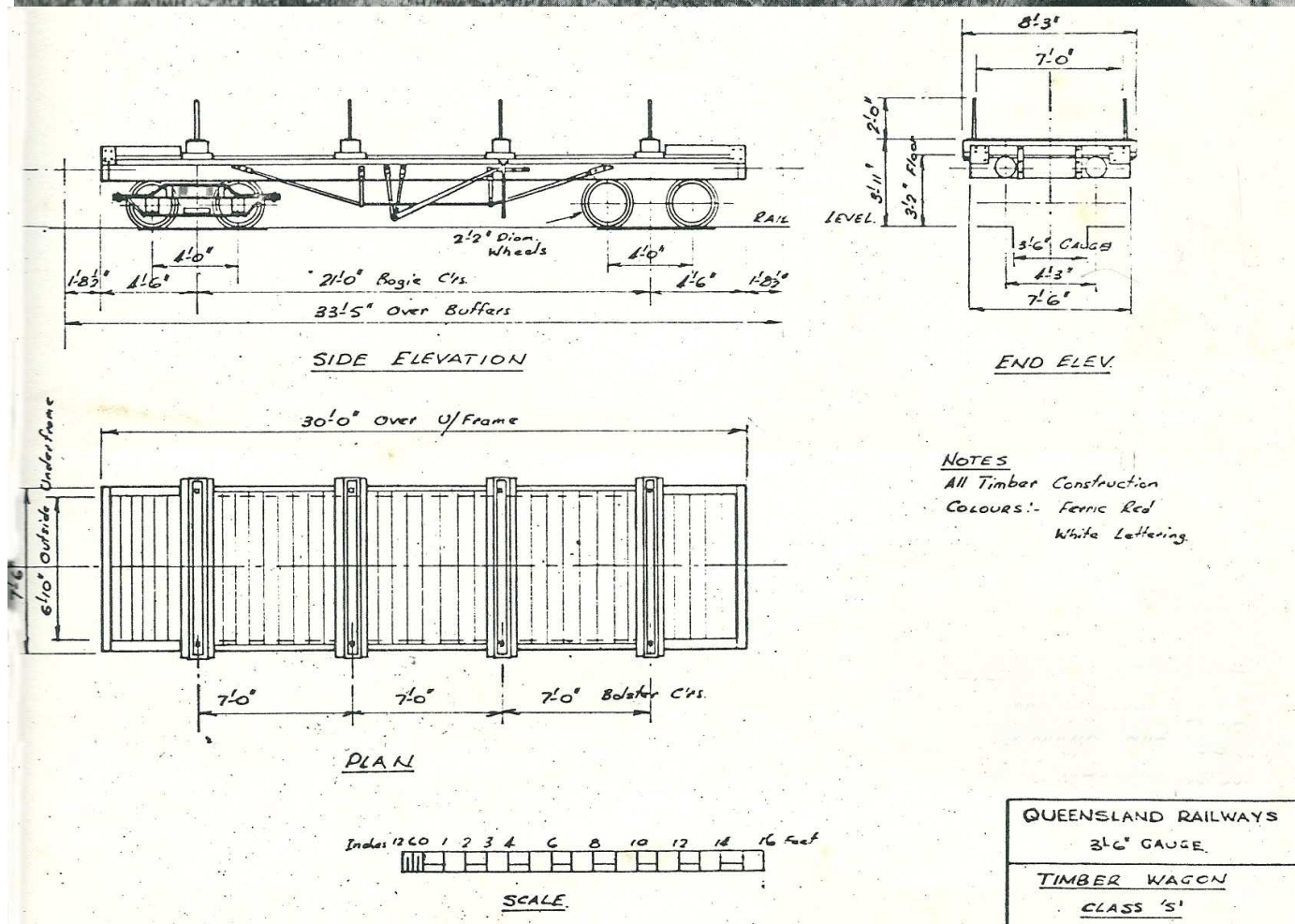
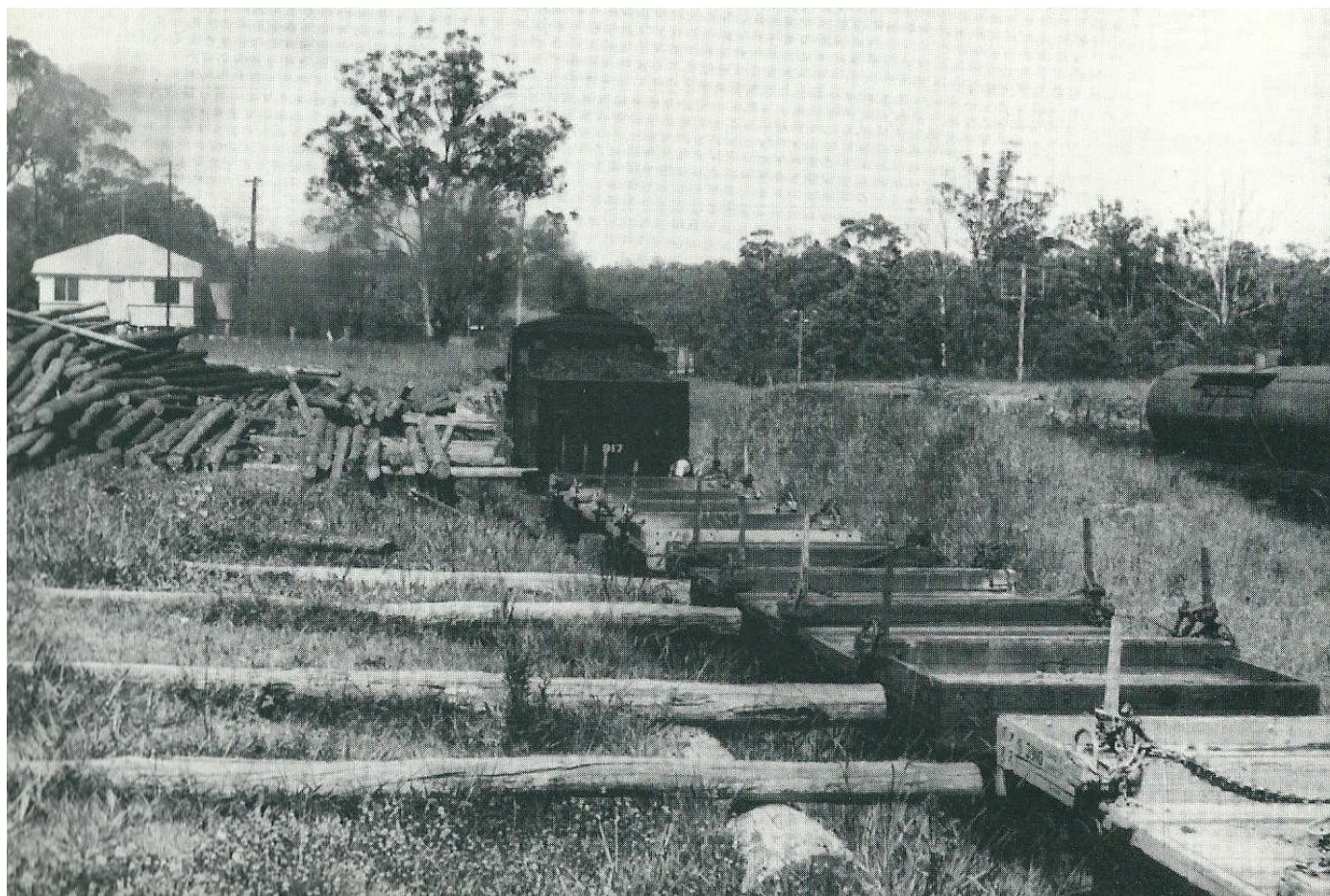


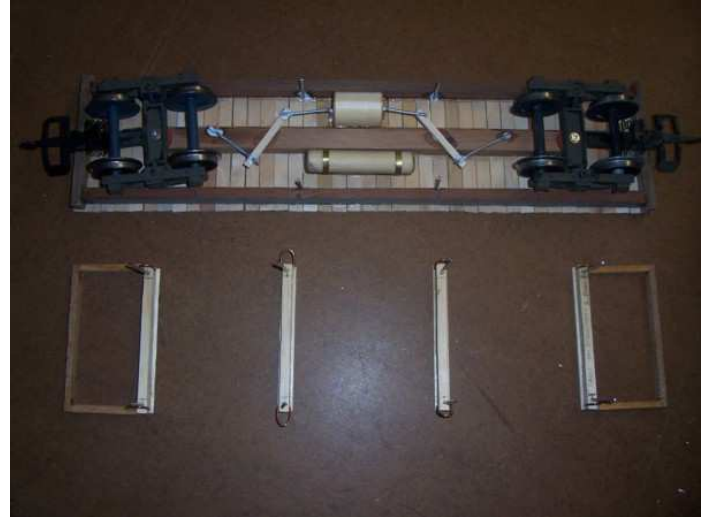
Barron Tableland Railway – S Class wagon, timber, logs or rails.



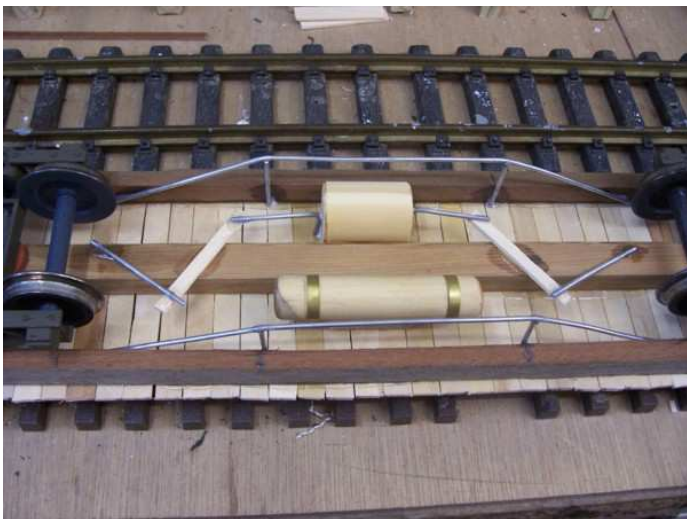
The drawing used to make the models of the S Class timber / log wagons.

Barron Tableland Railway – S Class wagon, timber, logs or rails.

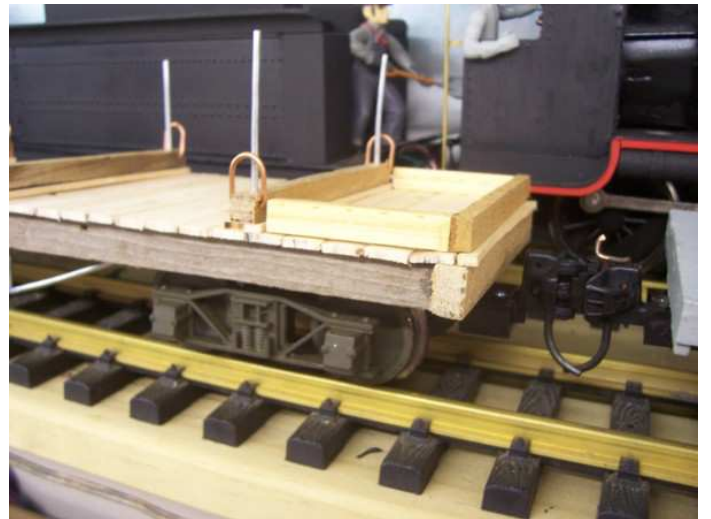
Parts under construction from split pine, dowel, copper wire, 2mm galvanized steel wire.



End bays as a subassembly which is pinned to the flatcar base when converting from M Class to S Class.



Undercarriage details modeled in wire and dowel.



End Bays and Baulks fitted ready for log loads.



Completed model ready for painting.



Chain "n" brackets are made of 1.6mm copper wire.

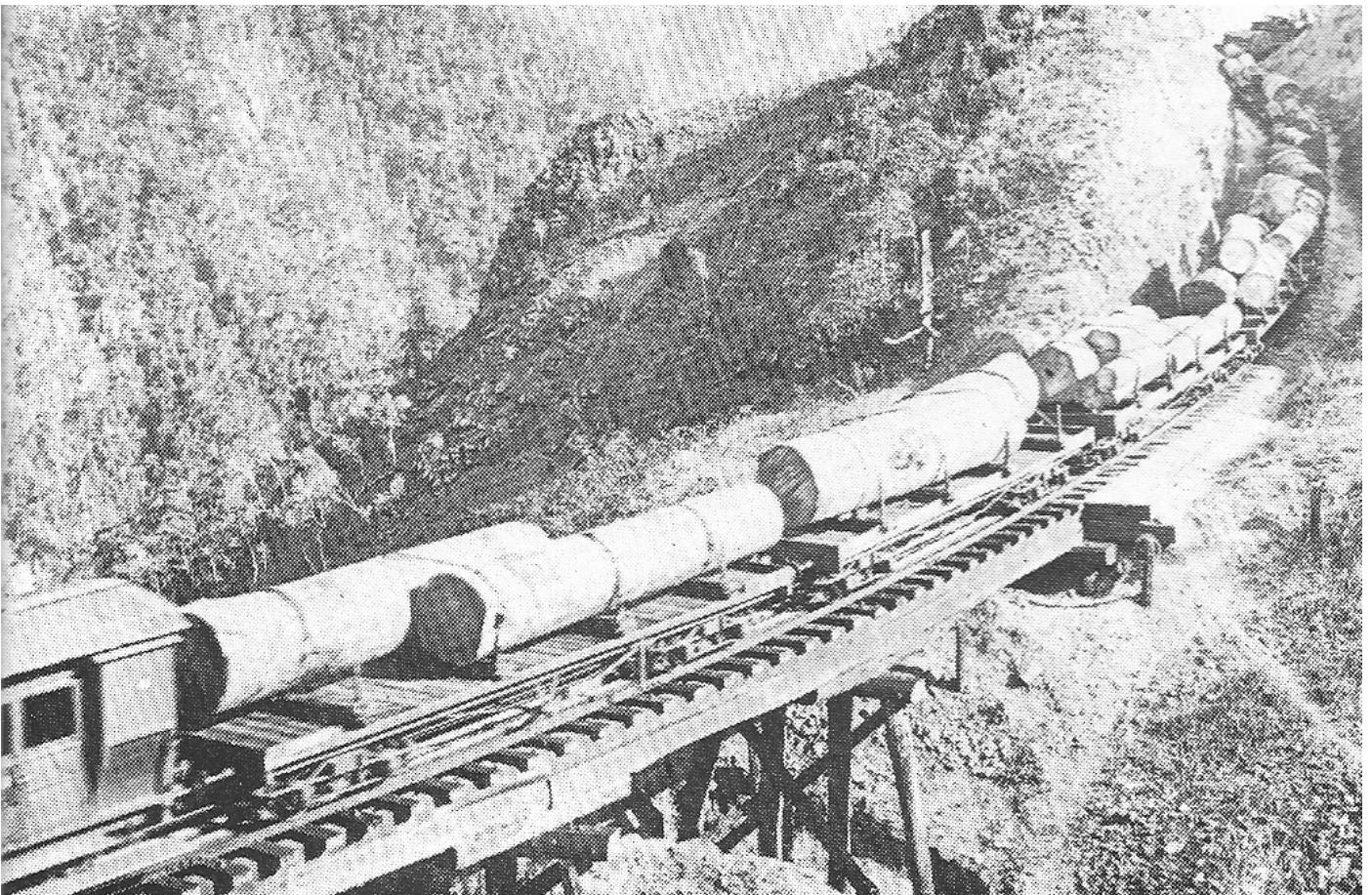
Barron Tableland Railway – S Class wagon, timber, logs or rails.



The completed S Class wagons in 1/24th scale.



An earlier HOn3 model made in the 1980's.



A train of S Class wagons descending the Range heading for the coast.